

Thursday, July 12, 2012
300 Atlantic Street
Stamford, CT 06901-3522
(203) 324-8100

MERRITT PARKWAY FROM NORTH:

Take Exit 35. Turn right onto High Ridge Rd. for approximately 2.5 miles. High Ridge Rd. will become Summer St., stay on Summer for approximately 1.5 miles. Take a left onto Broad St. At 1st light, take right onto Atlantic St. At 2nd light take left onto Tresser Blvd. At 1st light make left onto Edith Sherman St. Take immediate left into Public Parking for 300 Atlantic St.

I-95 SOUTH:

Take Exit 8. At 3rd light, take right onto Atlantic St. Go through 2 lights and at 3rd light take right onto Tresser Blvd. At next light take left onto Edith Sherman St. Take immediate left into Public Parking for 300 Atlantic St.

FROM NYC I-95 NORTH:

Take Exit 8. At end of ramp take left onto Atlantic St. Continue for 2 traffic lights and take right onto Tresser Blvd. At next light take left onto Edith Sherman St. Take immediate left into Public Parking for 300 Atlantic St.

PARKING

Parking will be provided if you park in 300 Atlantic Street Garage at our Stamford office.

Please register online at www.shipmangoodwin.com, go to Events on homepage and then click on July 12 on the calendar. Please feel free to register a guest as well.



Handling Special Education Challenges: Avoiding Due Process and Writing Legally Defensible IEPs



SHIPMAN & GOODWIN^{LLP}
COUNSELORS AT LAW



Handling Special Education Challenges:

**Avoiding Due Process and
Writing Legally Defensible IEPs**

*A Complimentary Seminar
presented by the School Law Practice Group*

Thursday, July 12, 2012
9:45 a.m. - 12:00 noon
Stamford, Connecticut

Handling Special Education Challenges: Avoiding Due Process and Writing Legally Defensible IEPs

Presented by Shipman & Goodwin LLP's School Law Practice Group

Free Registration

Registration required: space is limited so please register by July 5th.

About the Workshop



This workshop will focus on practical strategies for running effective PPT meetings and writing

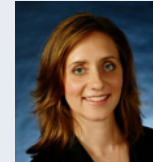
legally compliant IEPs. In order for teams to minimize conflict and avoid due process, it is important for all team members to understand the PPT process and how to respond to difficult, yet frequent, special education scenarios. In explaining the due process "process", we will focus on topics such as:

- Understanding the legal standards for determining FAPE
- Effective (and accepted) pre-PPT practices
- Tips for managing contentious PPTs
- Common pitfalls to avoid when writing IEPs
- Practical tips for responding to requests for IEEs, out-of-district placements, amendment of records, etc.
- Creating meaningful documentation

Speakers

Andreana R. Bellach

abellach@goodwin.com
(203) 324-8109



Julie C. Fay

jfay@goodwin.com
(860) 251-5009



Christopher A. Tracey

ctracey@goodwin.com
(203) 324-8155



Gwen J. Zittoun

(860) 251-5523
gzittoun@goodwin.com



Complimentary coffee and a light breakfast will be served.

Stamford: 300 Atlantic Street

DATE: July 12, 2012

Shipman & Goodwin LLP

TIME: 9:45 AM - 12:00 NOON

9:45 AM - Registration & Breakfast

10:00 AM - 12:00 - Seminar and Q&A

* A similar seminar was offered in April in our Hartford office.

Name: _____

Title: _____

Organization: _____

Address: _____

Telephone: _____

E-mail: _____

Register online at www.shipmangoodwin.com. On the events tab, click on July 12 on the calendar, or fax registration above to Jade Tarca at (860) 251-5214.